

MINIPARK CAMERA PARKING

Post-paid parking with maintenance-free ANPR cameras

A closed car park is quite expensive. The necessary hardware calls for high investments and because of wear mechanical parts, such as the barriers, are high in costly maintenance. At peak times big delays can occur at the entry and exit due to

time-consuming operations such as the removal or insertion of parking tickets. With the post-paid parking system Minipark these issues are a thing of the past.

Camera parking opens the gates

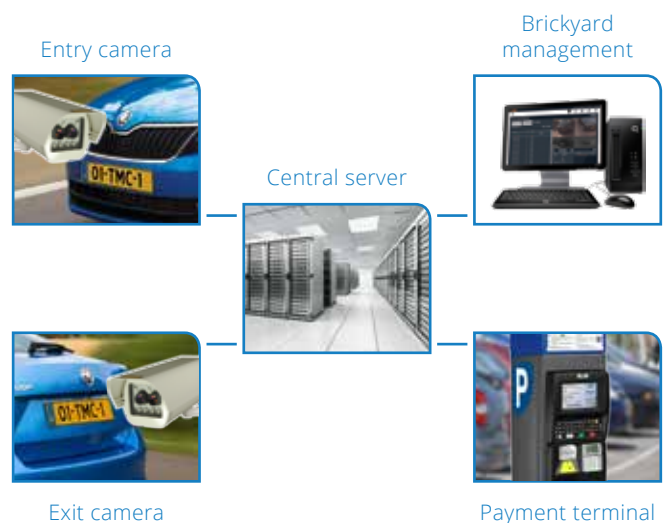
Minipark, also called “camera parking”, is an alternative parking system for closed parking locations such as parking lots and parking garages. Minipark is unique; Minipark opens up the entry and exit.

Automatic number plate recognition cameras (ANPR-cameras) scan the number plates of all the vehicles entering and leaving the parking location. This 24/7 ANPR-registration eliminates the need for a physical closure such as a barrier. A closed car park turns into an open, accessible and foremost a user friendly place.

- Open and accessible parking locations
- Post-paid parking (realtime pay per minute)
- Faster traffic flow at entry and exit
- No interference in case of failure
- Low exploitation costs
- Integrated in the Brickyard platform

Post-paid parking

When entering the parking location, the vehicle number plate is scanned and stored temporarily, the parker doesn't get a parking ticket. Before he leaves the parking location, he enters his plate number at the Strada payment terminal and pays the parking fee. The number plate is then released by the Minipark system and the parker is free to leave the parking location.



Non-payment leads to fine

When the parker passes the ANPR camera at the exit without paying his parking fee, the Brickyard back-office will notice the unreleased number plate. An enforcement officer can approve this violation in the back-office and forward it for further processing. The parker then automatically receives a fine at his home address.

With camera parking a closing barrier can be omitted. The terrain turns into an open and accessible area, with a faster traffic flows at the entry and exit. Of course, camera parking can also be used in combination with a barrier system.

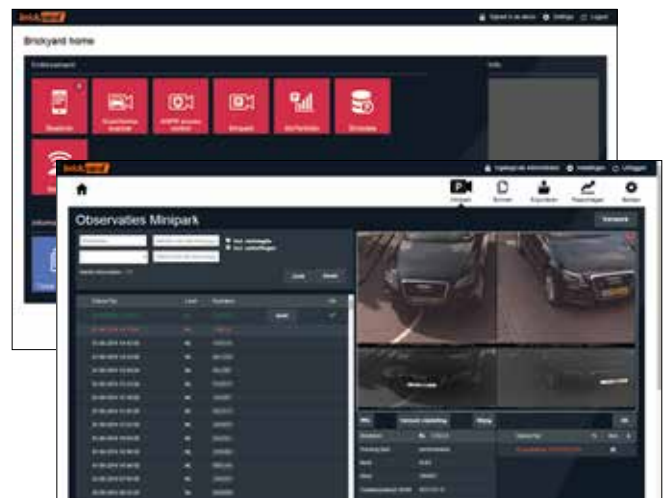
The powerful infrared LED's in the ANPR cameras allow for reliable 24/7 registration.



Brickyard

The management system of Minipark camera parking is part of Brickyard, the central back-office system of TMC. The Brickyard violator overview only highlights the offenders. An authorized person, such as an enforcement agent, can assess the findings. After approval, he can export the tickets to a ticket processing entity.

Brickyard brings all management applications under one roof. Combining data offers an even better insight into the mobility of your city, controlling everything in a single click!



Brickyard platform

© 2015 Taxameter Centrale B.V. All rights reserved. Images and specifications are subject to change. Without written confirmation of TMC, no rights can be derived from the information published.



Taxameter Centrale B.V. (or TMC for short) started in 1927 importing instruments for automobiles. In the seventies the foundation was laid for the current product portfolio. Since then TMC is constantly looking for new solutions that help clients achieve their mobility goals more effectively and more efficiently.

H.J.E. Wenckebachweg 80
1114 AD Amsterdam-Duivendrecht
The Netherlands
+31 20 462 0 462
www.taxameter.nl
offstreetparkeren@taxameter.nl